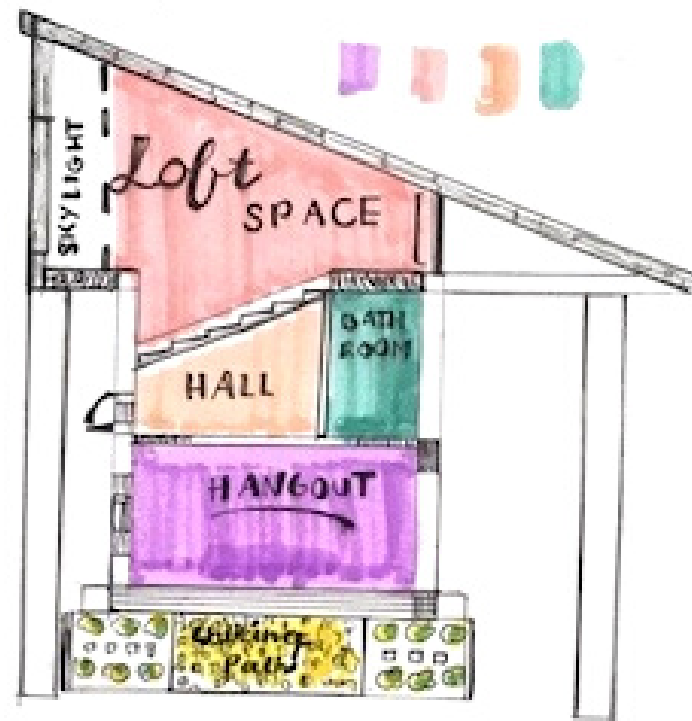


HUONG:  
COMPLEMENT  
CONTRADICTORY

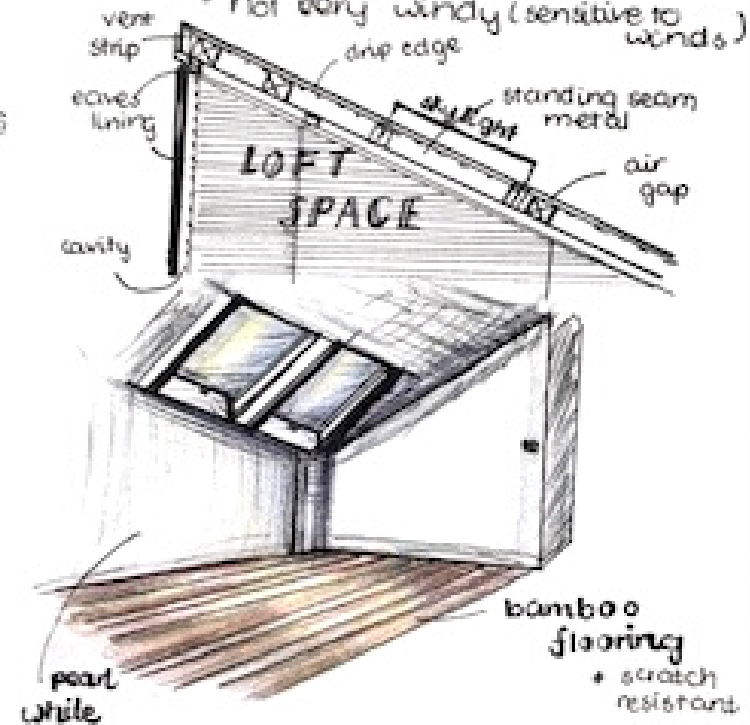
# ARCHITECTURE



## Ideation



Why a Skillion Roof?  
\* Eco-friendly installation  
- Includes skylights  
- Ideal for low-valley weather conditions  
- Good to drain water  
- Not very windy (sensitive to winds)



## Theme: Biophilic Modern

The inspiration for this render came from my mom's desire to buy a house in California. I wanted to design a skylight house outside that functions as a storage room and enjoying nature. Made from bamboo flooring, though it can be expensive for installation, the model achieves the goal of a clean, sustainable flooring installation.




2

## Research




Materials

- Clementine boxes
- Woods



Fact: Clementine boxes are made in Morocco

The Construction of the Boxes

- ①   
Woods and cardboards are cut
- ②   
They are glued to make boxes
- ③   
Holes could be drilled

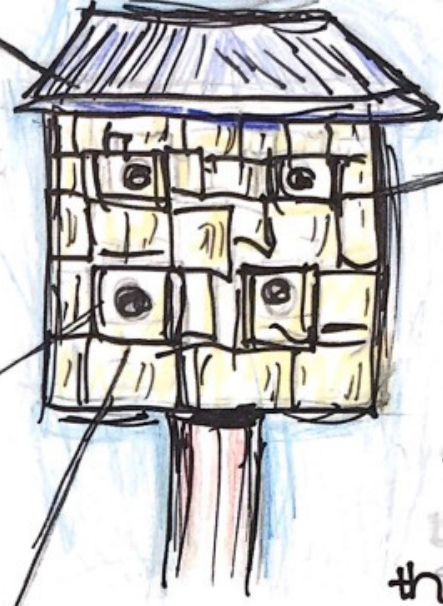
After Fulfilling Its Purpose  
They are then dumped into landfills or disposed of.

3

## Synthesis

Audience: Nature lover, bird lover, ect...

Woods are cut to form the house's roof.




Clementine boxes are chopped in halves and put together to form the squared house.

In different sizes!

Holes are drilled for birds to "settle in."

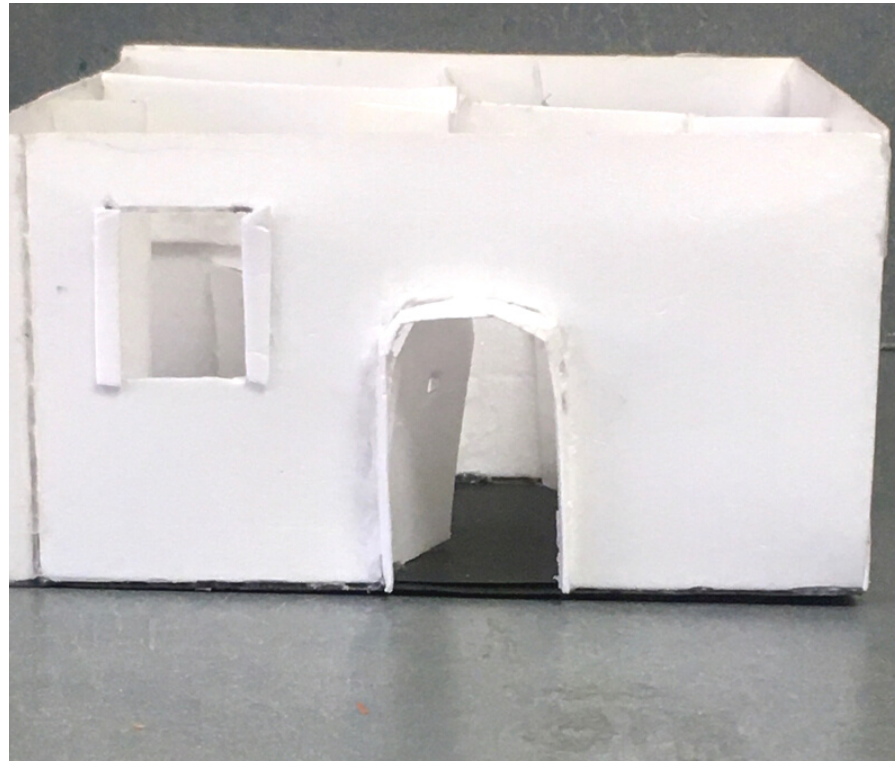
It's sustainable because

- it helps recycle Clementine boxes
- it supports and helps nature.



# Upcycling Art

As a part of my design studies project, I created a bird feeder made out of recycling clementine boxes and hardwood scraps as two of the available materials at a design camp. The research explores the usage of repurpose clementine boxes that shape basic human values and experiences in daily life. My work implemented the interaction between nature and the heart of design studies, where reusable materials are utilized to provide a safe space for organisms.



Foam board model of  
the first floor of a  
single-family house

---

# Contrasting Geometry

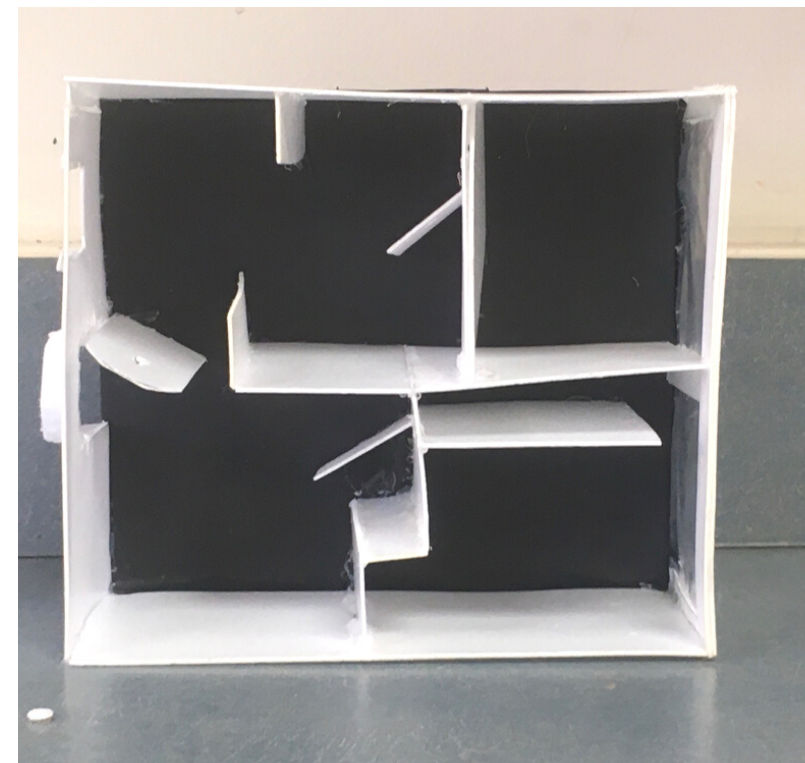
## Foam Model

DETAILS 1

front elevation

DETAILS 2

floor plan





### Contemporary House with Classical Elements.

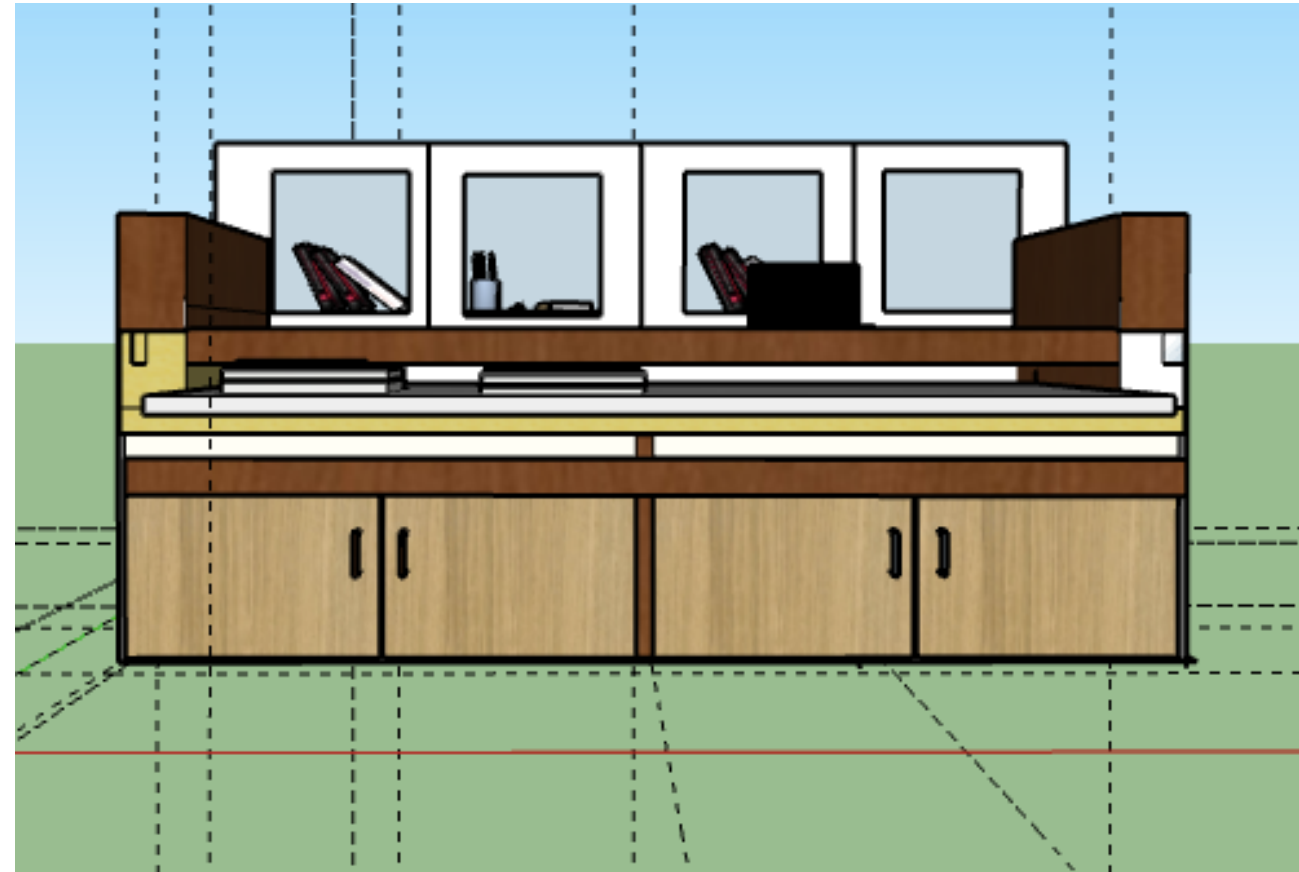
Inspired by Frank Gehry's fabrication of disjointed lines into his sketches, this contemporary model strives to foster nature and classical elements. The design process consisted of analyzing the existing hilly landscape of Raleigh. The asymmetrical configuration and incorporation of windows allow natural lightning. Intricate elements are made to connect the "new" and "old", and by incorporating a marble facade and Tuscan orders; it elevates a sense of luxuriousness.



Plan view. Contemporary House with Classical Elements.



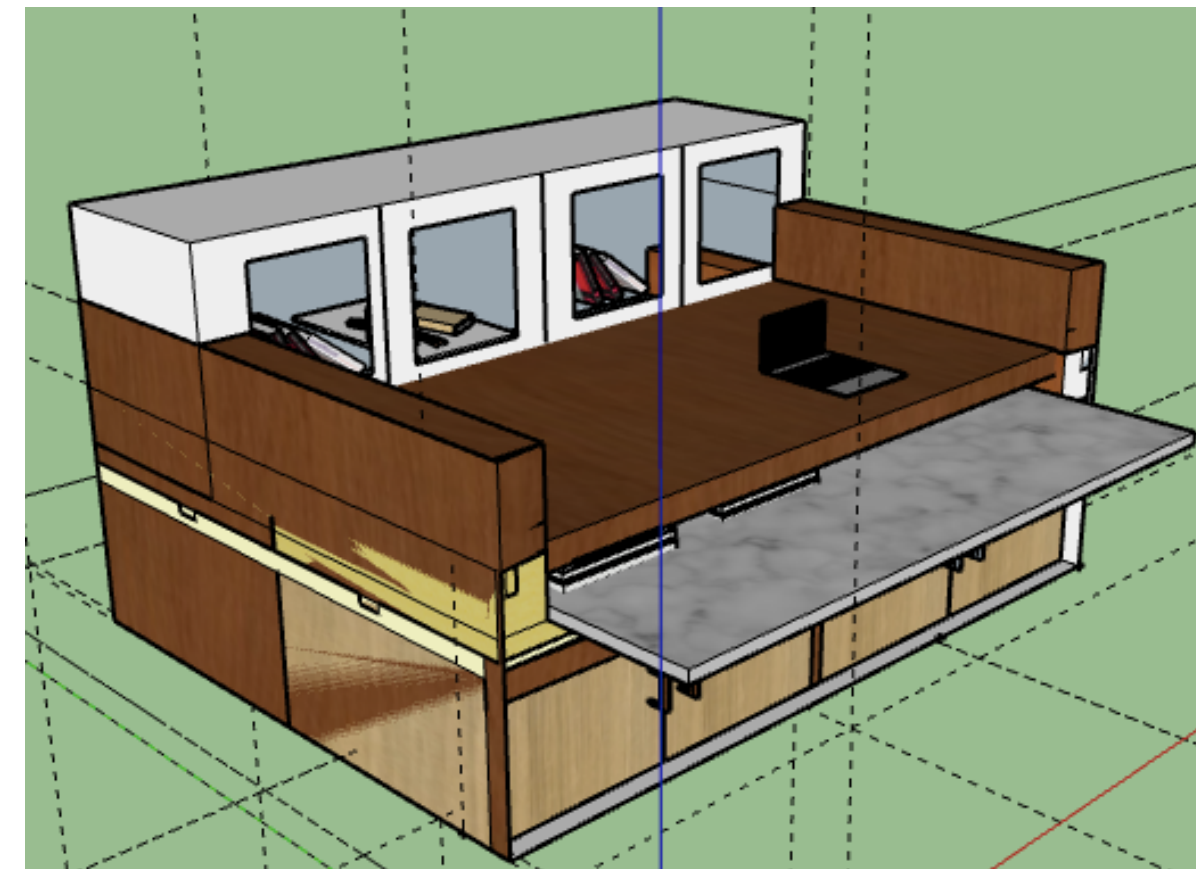
Marble facade. Contemporary House with Classical Elements.



## Multi- functional Cabinet

First, I aim to empathize with my main audience, parents. For parents with young children, cooking and spending familial time with kids are the main concerns. Kids would need a space to study, read, or eat snacks in the kitchen without making a big hassle by bringing food into the bedroom. Because of this, my cabinet has six cabinets in total to place all your books, snacks, and even wine with ease. It opens up to a wide table at the center. It is an open concept for your children, a welcoming space that sets up the environment for productive learning. Underneath is a second hidden table compacted neatly, able to slide in and out.

Parents can watch their kids in their busy schedule. Kids are welcome to ask their parents questions at any time if they need homework help. This unites the family together, gathering them into the heart of the home with everyone open to help each other out.



# Master's Study

Leonardo da Vinci's *The Last Supper* describes an intertwining chaos that is unconventionally perfect in its sense. In *The Last Supper*, the dramatic background and the subject of eating, though unseeingly unrelated, weave together a story about rage, sadness, and peace in a refectory. When I saw *The Last Supper*, I saw a wide range of feelings, from grief, anger, to acceptance. Enriched by the point perspective background along with the classical facade, the piece's architecture serves as a contrast. In my master's study, I aim to create a contemporary artwork with classical elements, where the emphasis is centered towards Jesus as the main subject, as evidently seen through his bright clothing statement and clearer facial contrast from others. Through this, I hope to convey my interpretation in the emotional allusions in silence, where ranging thoughts of betrayal, hurt, and serenity encompass the mind. The architecture converges through the shade of these aspects.





---

# Self Portrait

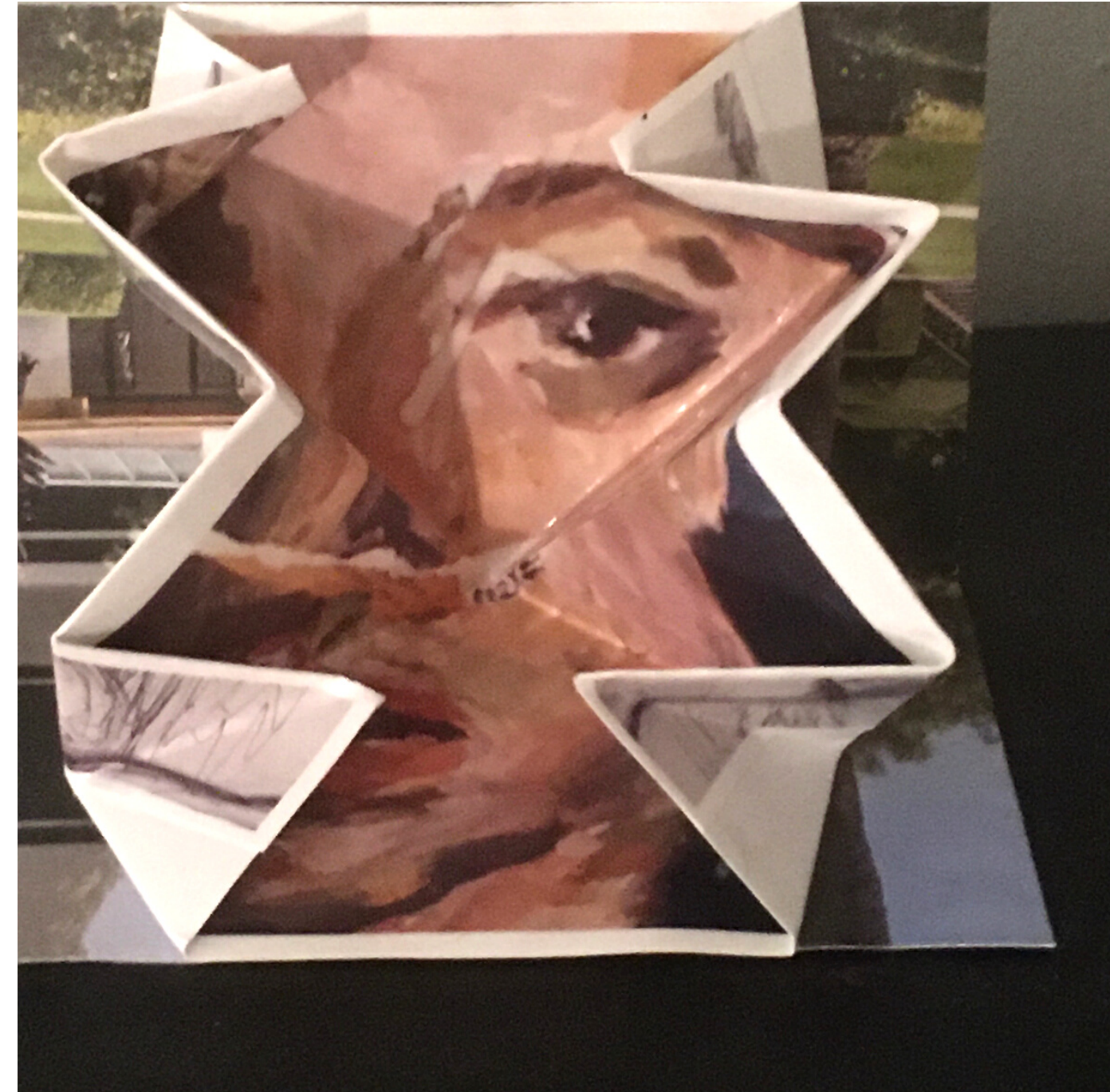
As an artist, we are prone to have a unique trademark that sets us and our creations apart. Through this piece, I want to allow viewers to learn about the personality of the painting's subject merely through the contrasting color tones. The formality of the subject's presence is conceded by the warm color tones, employing a soft and amiable appearance. The vivid hues, along with the curvilinear face shape, contrast the apathy emotional state and the neutral background. It creates a state of transient, where viewers can experience the reflective tone of the piece.

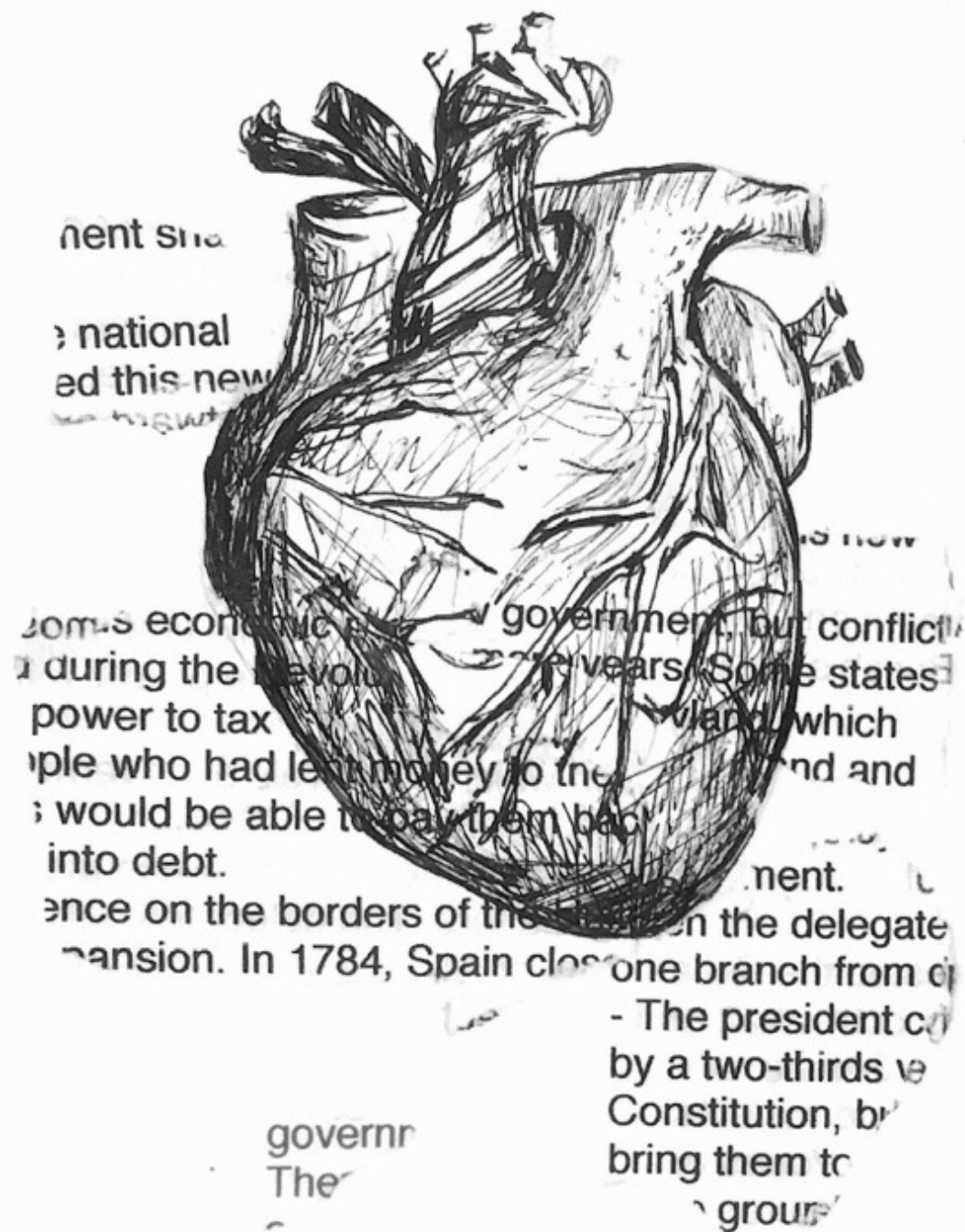


---

# Center Piece

Using a similar folding technique to zine-making, I created a paper sculpture with fluid acrylic and collages. My piece centers around the interaction of the subjects to its background environment, where a unique narrative is generated. Through my work, the main highlight would be the menacing glance of the subject, implying the feelings of anger, hurt, and fear. The foreground of the tree shadows contrasted with the light ivory facade in the background. It is open to interpretation, allowing viewers to discover the meaning behind the sculpture's organic shape.





- 27 -

rupi Kaur

---

# Book Anthology

As an artist, we are prone to have a unique trademark that sets us and our creations apart. Through this piece, I want to allow viewers to learn about the personality of the painting's subject merely through the contrasting color tones. The formality of the subject's presence is conceded by the warm color tones, employing a soft and amiable appearance. The vivid hues, along with the curvilinear face shape, contrast the apathy emotional state and the neutral background. It creates a state of transient, where viewers can experience the reflective tone of the piece.

✉ [mhuong1703@gmail.com](mailto:mhuong1703@gmail.com)

<http://huongnguyen.netlify.app/>

HUONG:  
COMPLEMENT  
CONTRADICTIONARY